

Math 1110

Quiz 1

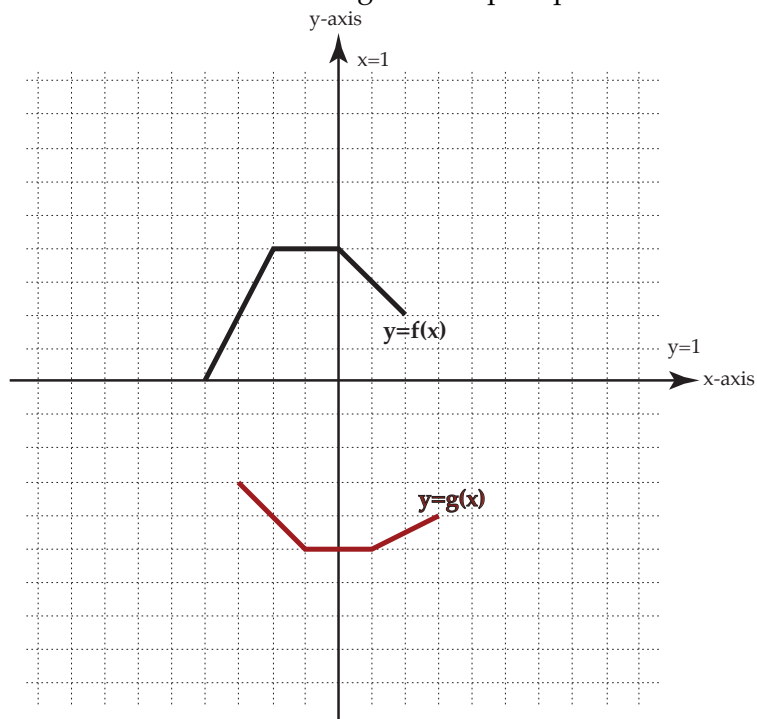
Name: _____

Section (circle) 004/005

Problem 1. Please fill in the table.

θ	$\sin \theta$	$\cos \theta$
0	0	1
$\pi/6$	$\frac{1}{2}$	$\frac{\sqrt{3}}{2}$
$\pi/4$	$\frac{\sqrt{2}}{2}$	$\frac{\sqrt{2}}{2}$
$\pi/3$	$\frac{\sqrt{3}}{2}$	$\frac{1}{2}$
$\pi/2$	1	0

Problem 2. The graph of $f(x)$ is shown in the figure below. It has domain $[-4, 2]$ and range $[0, 4]$. Please sketch the graph of the function $g(x) = -\left(\frac{1}{2}f(x-1) + 3\right)$ on the same set of axes, and indicate its domain and range in the space provided.



The graph of $g(x)$ is shown on the graph to the left in red. It has

$$\text{Domain}(g(x)) = [-3, 3]$$

$$\text{Range}(g(x)) = [-5, -1]$$